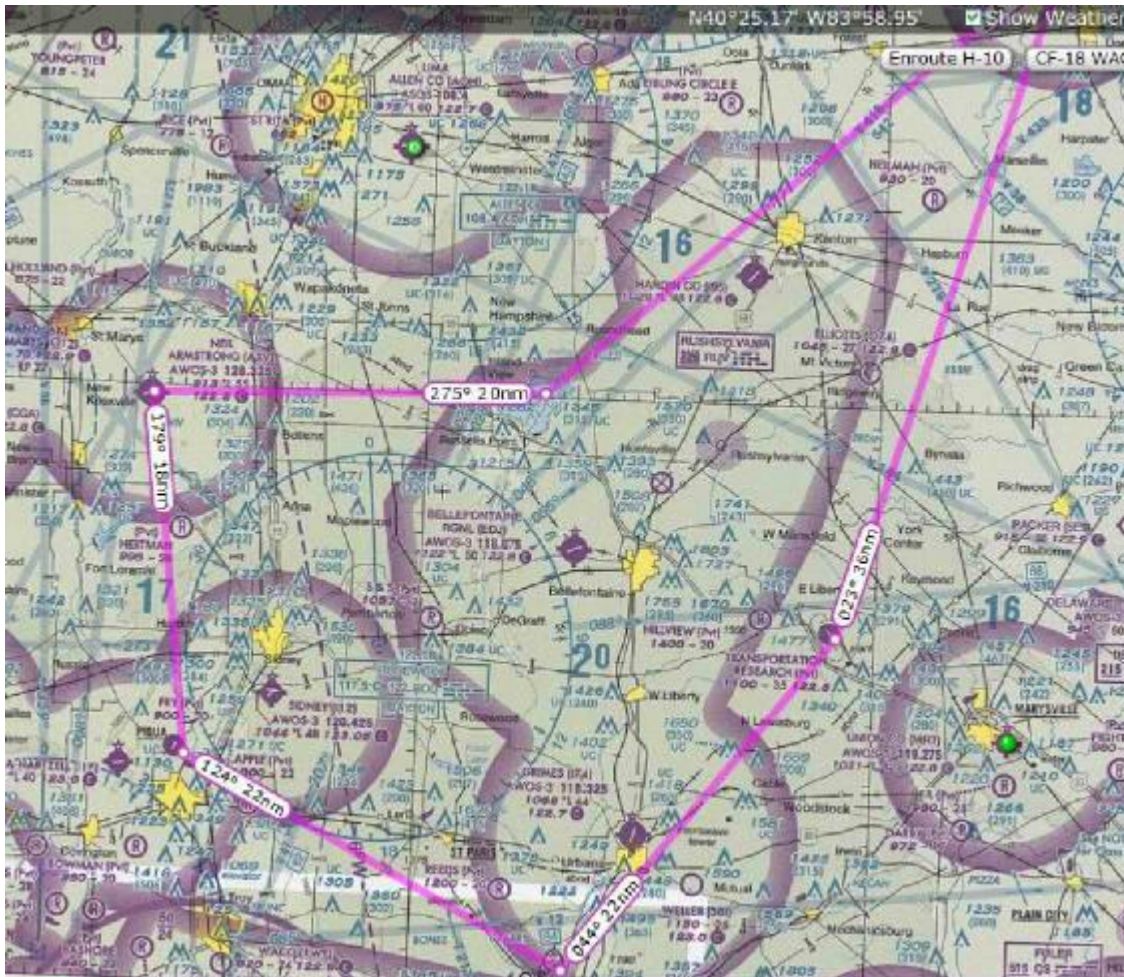


# Cross Country MERFI 50/150 Air Race 2015



The 2013 MERFI Air Race will be a seven turn, 150 NM course.

**Start**  
**I74 122.700**  
**40° 07.79'N 83° 45.28'W**

**Turn 1**  
**123.000**  
**40° 3.261'N 83° 55.326'W**

**Turn 3**  
**I54 123.000**  
**40° 1.228'N 83° 49.985'W**

**Turn 3**  
**90I5 TRC Pvt, 122.800**  
**40° 18.396'N 83° 32.685'W**

**Turn 4**  
**56D Wyandot Co. 122.900**  
**40° 53.347'N 83° 18.776'W**

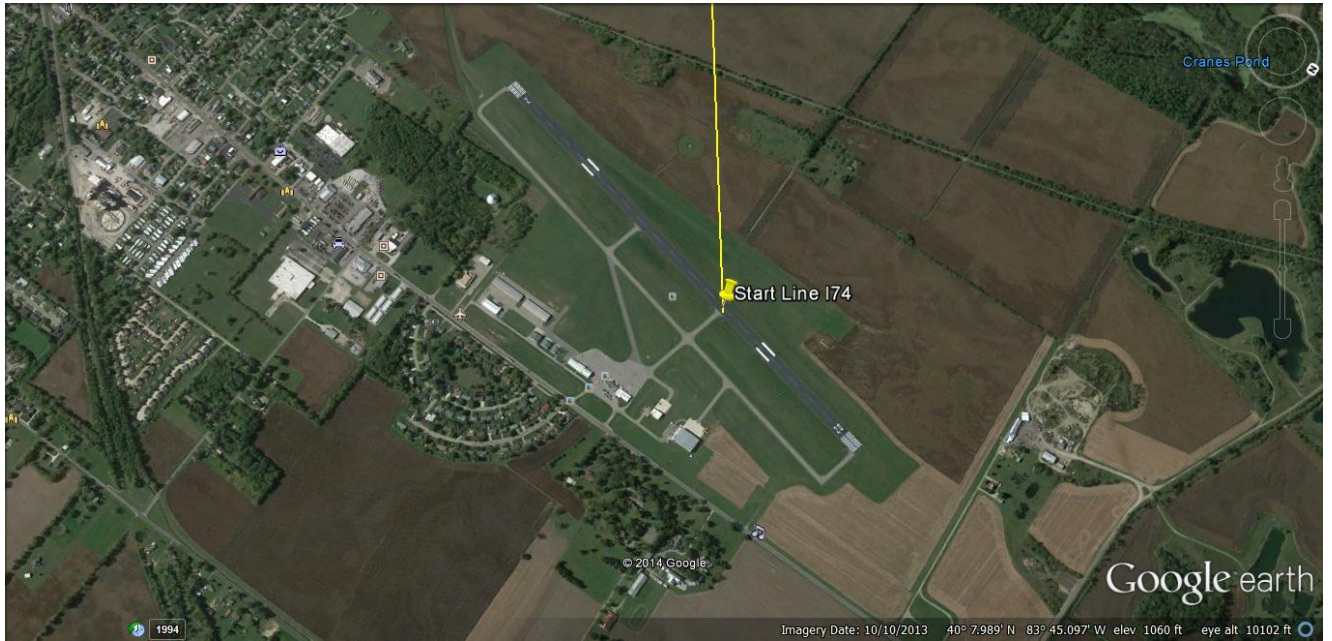
**Turn 5**  
**Lakeview, OH 122.900**  
**40° 30.251'N 83° 52.316'W**

**Turn 6**  
**AXV Neil Armstrong, 122.800**  
**40° 29.626'N 84° 18.119'W**

**Turn 7**  
**00H8 Fry airport, 123.000**  
**40° 11.473'N 84° 15.232'W**

**Finish**  
**I54 Mad River, 123.000**  
**40° 1.228'N 83° 49.985'W**

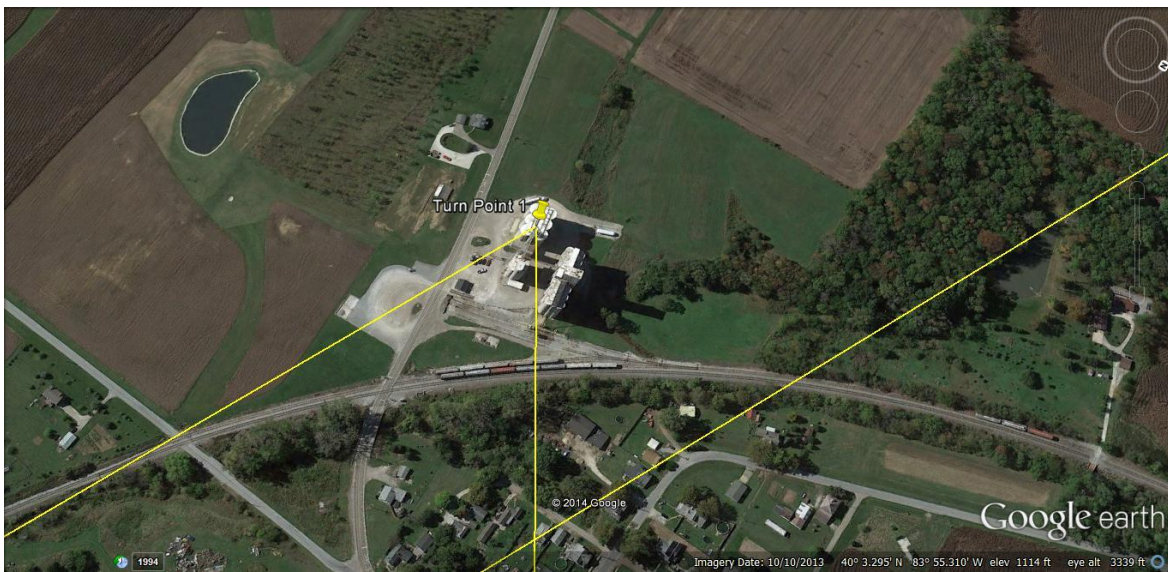
**Recover**  
**I74 Urbana Grimes Field**



Start at Grimes Field at 30 second intervals or at the direction of the start official.  
Proceed direct Turn 1.

**After your launch, switch to 123.0.**

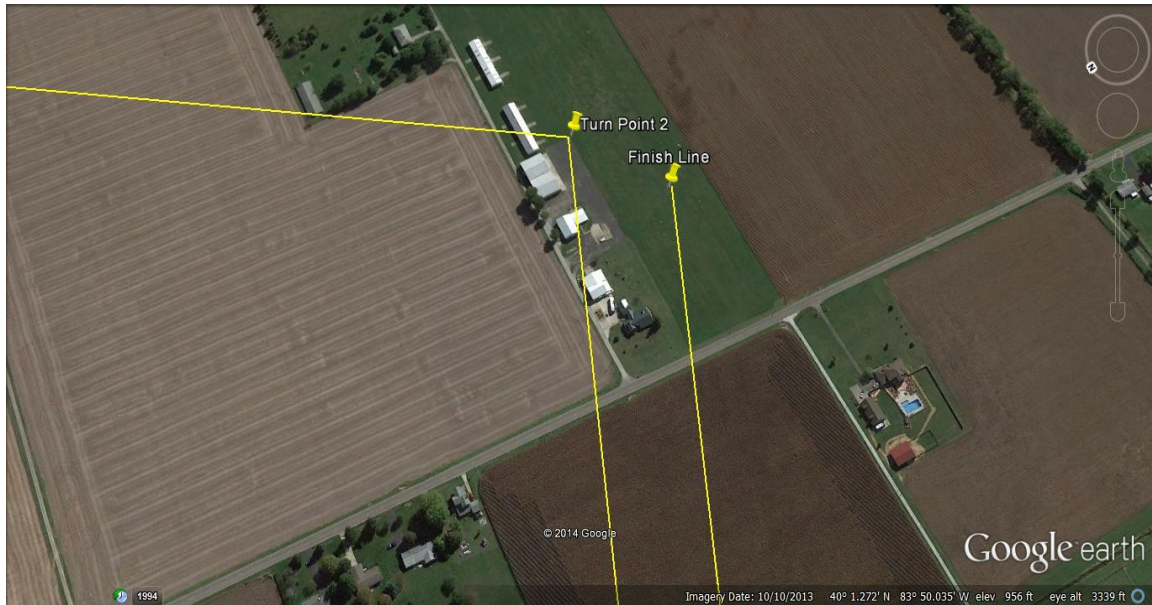
Turn 1 is the grain elevator silos. Make your turn at or above 1,600 feet MSL and make your turn call on 123.0, i.e. "Race Two Six, Turn One".



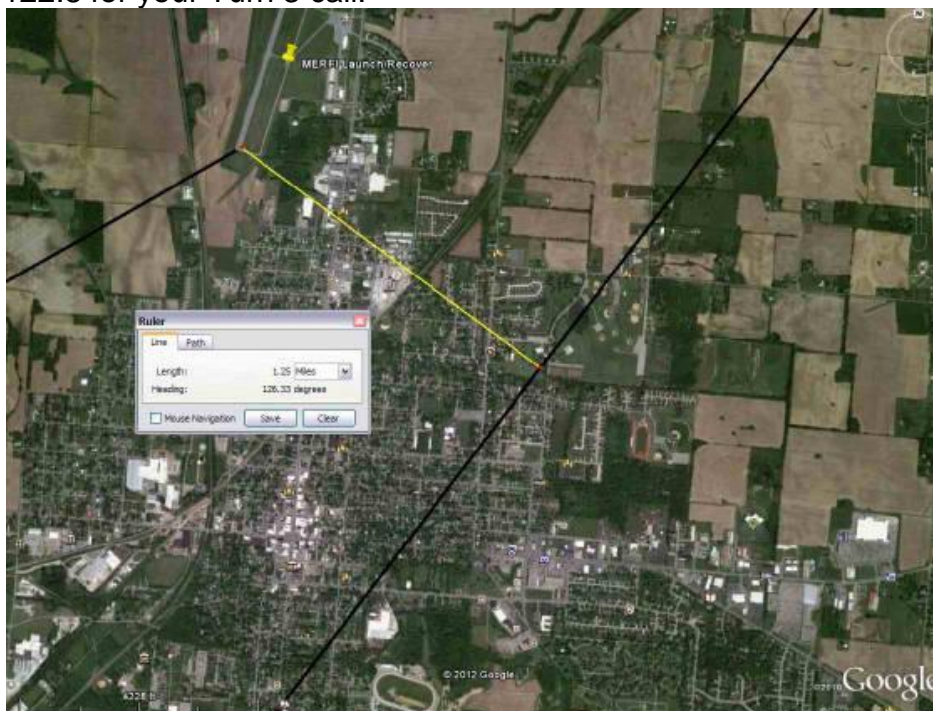
**40° 3.261'N 83° 55.326'W**

Turn 2 is the end corner of the apron. Minimum altitude is 2000 feet. Turn call frequency is 123.00.

Turn 2  $40^{\circ} 1.228'N$   $83^{\circ} 49.985'W$



After crossing turn two the route to turn 3 is only **1.25 NM** from the runway at Grimes Field. 2,500 feet puts you 500 feet above the traffic pattern altitude, but keep a sharp eye in this portion of the race. Once clear of the Grimes traffic area, switch to 122.8 for your Turn 3 call.



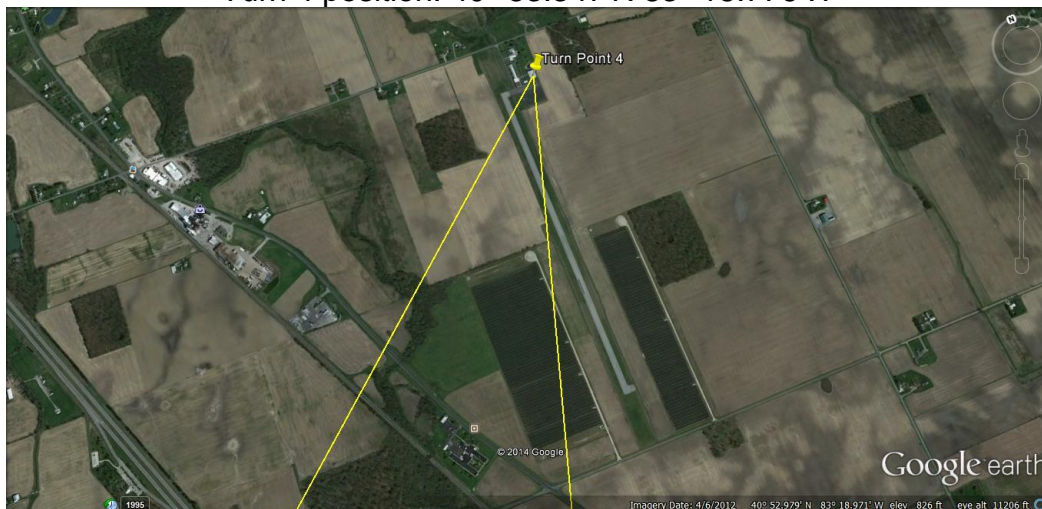
Turn 3 is the center of the infield at the Transportation Research Center of Ohio. Make your turn at or above 1,600 feet MSL and make your turn call on 122.8, e.g. "Race Two Six, Turn One".

Turn 3 position: 40° 18.396'N 83° 32.685'W



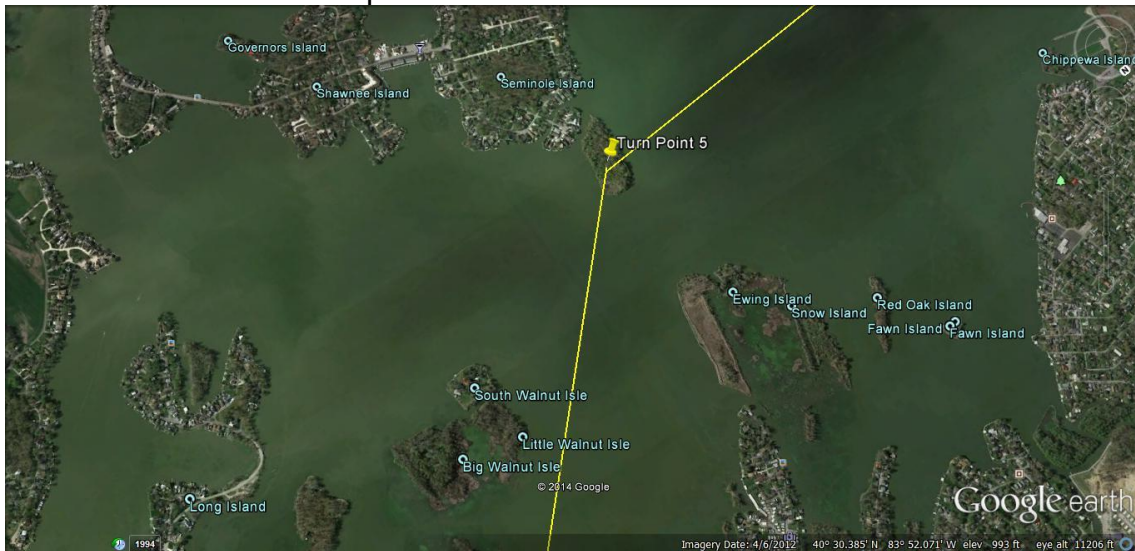
Turn 4 is the hangar at the north end of the runway at Wyandot County airport (56D). Turn altitude is 1,900 feet MSL. Turn frequency is 122.9

Turn 4 position: 40° 53.347'N 83° 18.776'W



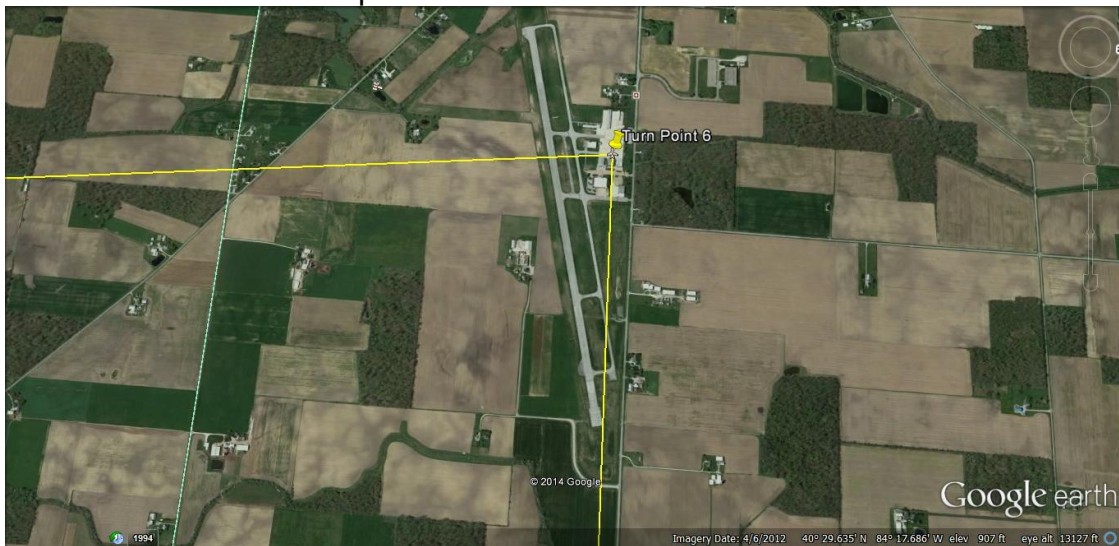
Turn 5 is the small uninhabited island just north of Seminole island. Turn altitude is 1,500 feet MSL. Turn frequency is 122.9

Turn 5 position: 40° 30.251'N 83° 52.316'W



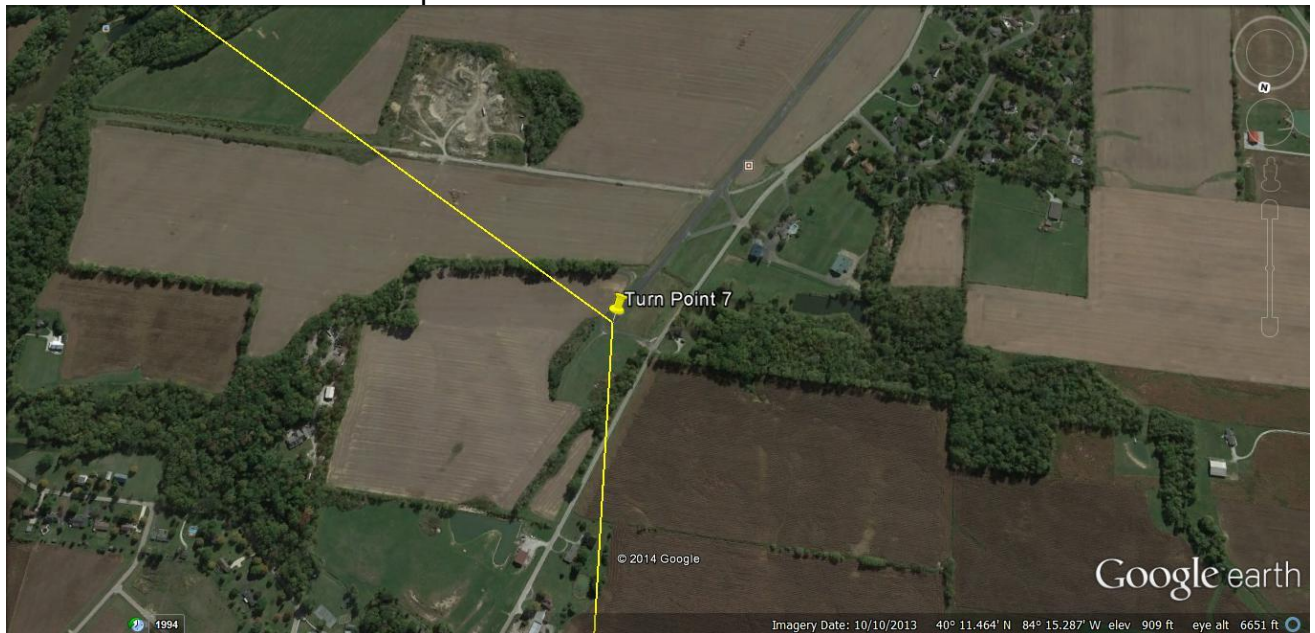
Turn 6 is the taxiway intersection in front of the ramp at Neil Armstrong Airport, AXV. Turn altitude is 2,000 MSL Turn frequency is 122.8

Turn 6 position: 40° 29.626'N 84° 18.119'W



Turn 7 is the numbers at the north end of the runway at Fry Airport, 0OH8. Turn altitude is 2,000 feet MSL. Turn frequency is 123.0.

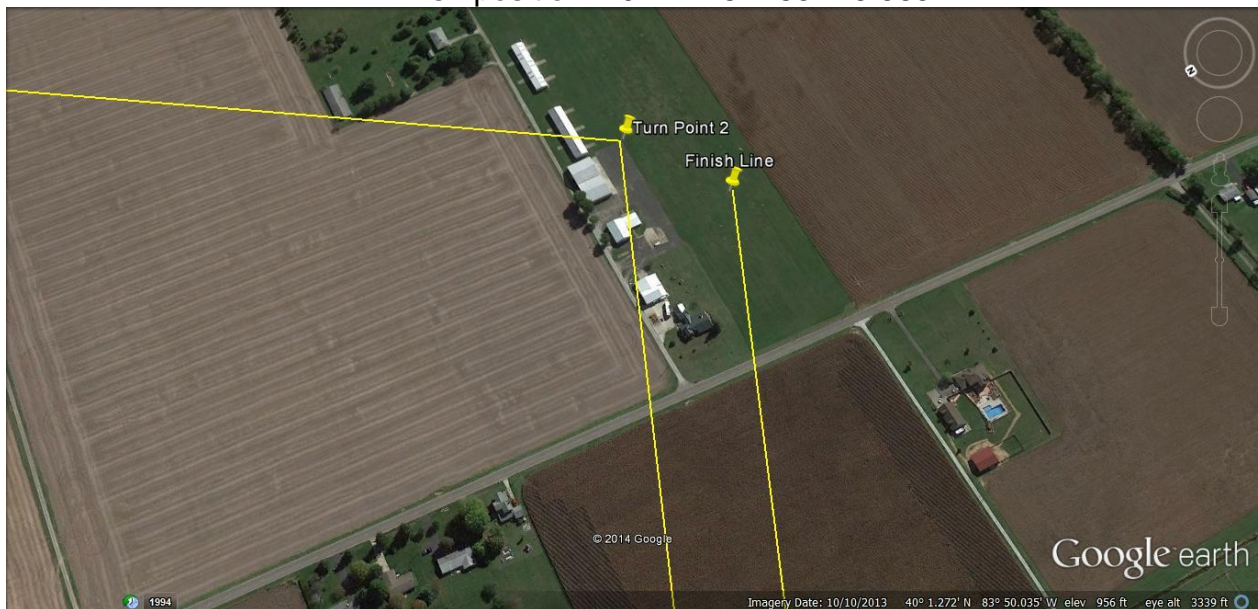
Turn 7 position:  $40^{\circ} 11.473'N$   $84^{\circ} 15.232'W$



Remaining on 123.0, call 2 nautical miles out from the Finish line, e.g. "Race Two Six, Two Miles, Finish".

Cross the finish line above 50 feet AGL, calling as you cross, e.g. "Race Two Six, Finish!"

Finish position:  $40^{\circ} 1.228'N$   $83^{\circ} 49.985'W$



After your finish, climb to 2,000 MSL, switch to 122.7, and proceed to Grimes Field I74 for recovery. Stay alert for fly-in traffic !

