

2021 Sunrise 100 Challenge Short Course

Course is intended for aircraft with an speed of 100mph or less.

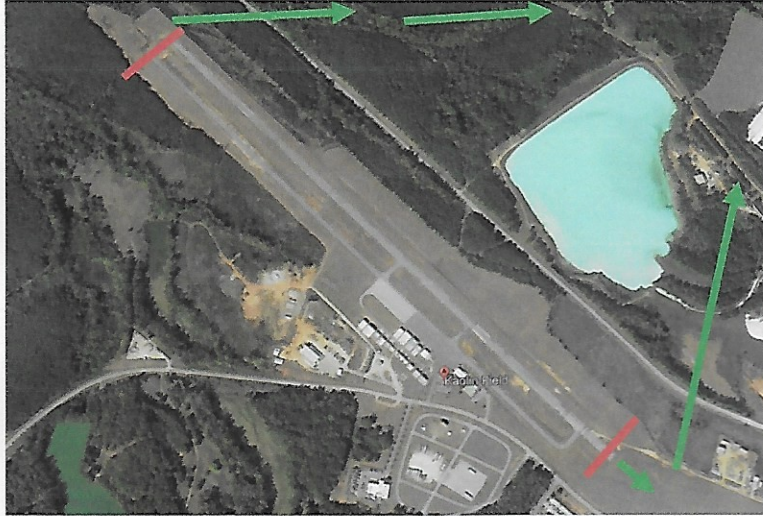
Official distance is 109.67 nm

START SUNRISE 100 SANDERSVILLE, GA – KOKZ

COMM: 123.0

ELEV: 438

Stay below pattern altitude before start



Engine start and taxi to start as directed.

Start as directed.

Take off 31, fly full length of runway.

Start Line is end of runway.

Right turn on course to SJ3

Take off 13, fly full length of runway.

Start is end of runway.

Left turn on course to SJ3

Start Airport: 32°57'58.89" N 82°50.15.23"

Turn 1: 2J3: 32°58'57.03' N 82°22'43.28" W

Outbound Hdg: 092°

FINISH SUNRISE 100 SANDERSVILLE, GA – KOKZ

COMM: 123.0

ELEV: 438

Fly Finish Above Pattern Altitude



**Call, "Race 77, 5 miles finish and again 1 mile
From finish.**

Line up on taxiway just North of the Terminal.

Finish line is the runway.

Make clear, concise call on the finish.

After finish join normal traffic for landing.

Start Airport: 32°57'58.89" N 82°50.15.23"

Inbound Hdg: 239°

SUNRISE 100

Turn 1 **Louisville Municipal 2J3**

Comm: 122.9 **Elev: 437**

Fly by: **Above 1000AGL**



**Make identification call on Turn,
"Race 77, Turn 1".**

Turn: 32°58'57.03"N 82°22'43.28"W

Inbound Hdg: 092°

Outbound Hdg: 108°

SUNRISE 100

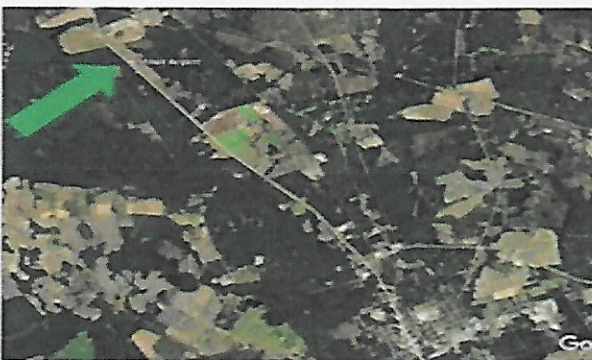
Turn 2

Comm: 122.9

Fly by above 1000AGL

Millen 2J5

Elev: 237



Airport is 5 miles North of town of Millen.
Fly over runway and turn outbound to 65J
Call "Race 77 Turn 2" on turn.

Turn: 32°53'58.14" N 81°53'00.81" W

Inbound Hdg: 108°

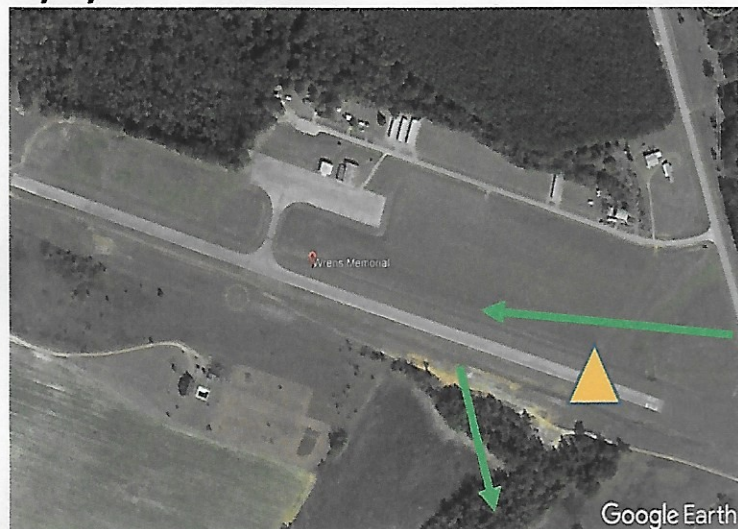
Outbound Hdg: 318°

SUNRISE 100

Turn 3: Wrens 65J

Comm: 122.7 Elev: 450'

Fly by above 1000AGL



Left Turn over runway.

Call "Race 77, Turn 3" on turn

Turn: 33°13'18.06"N 82°22'49.45"W

Inbound Hdg: 318°

Outbound Hdg: 239°

FINISH SUNRISE 100 SANDERSVILLE, GA – KOKZ

COMM: 123.0

ELEV: 438

Fly Finish Above Pattern Altitude



**Call, "Race 77, 5 miles finish and again 1 mile
From finish.**

Line up on taxiway just North of the Terminal.

Finish line is the runway.

Make clear, concise call on the finish.

After finish join normal traffic for landing.

Start Airport: 32°57'58.89" N 82°50.15.23"

Inbound Hdg: 239°