

The MERFI 50 nm Air Race Course Guide 2023



Three turn 50nm course

174 Grimes Field

Start
I74 122.700
40° 07.79'N 83° 45.28'W

Turn 1
EDJ 122.800
40° 22.34'N 83° 49.15'W

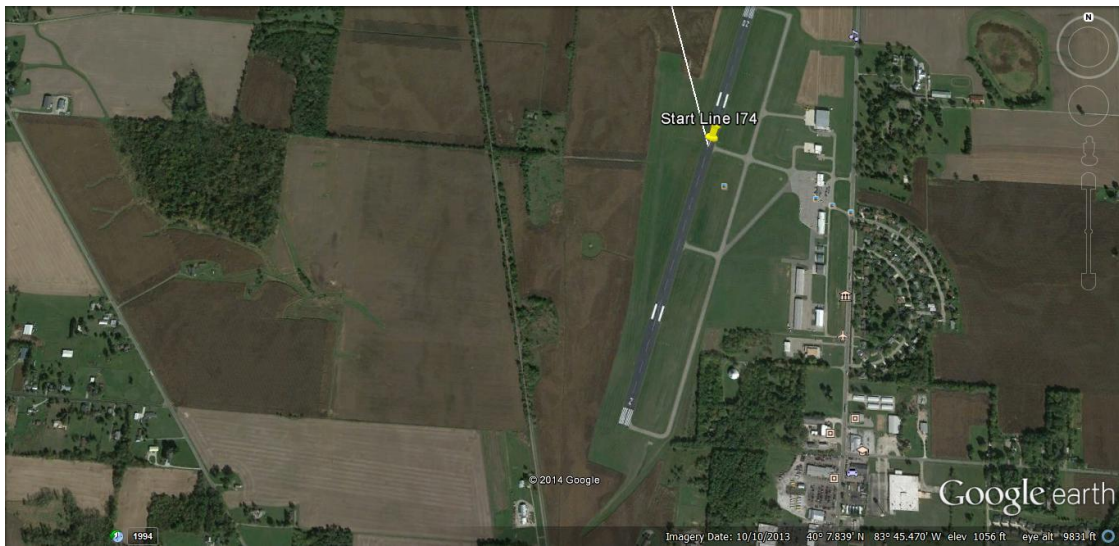
Turn 2
I12 123.050
40° 14.48'N 84° 8.87'W

Turn 3
Grain Elevator 123.000
40° 3.261'N 83° 55.326'W

Finish
I54 123.000
40° 1.228'N 83° 49.985'W

Recover
I74 Grimes Field

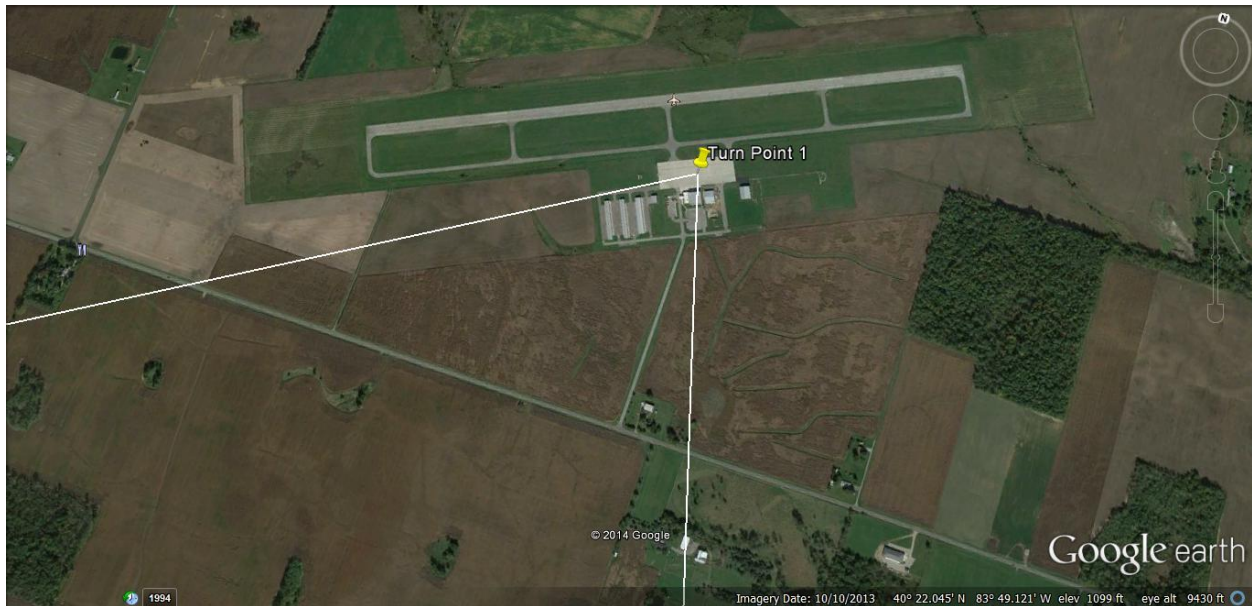
I74 Grimes Field



Start at Grimes Field at 30 second intervals or at the direction of the start official.
Proceed direct to turn 1.

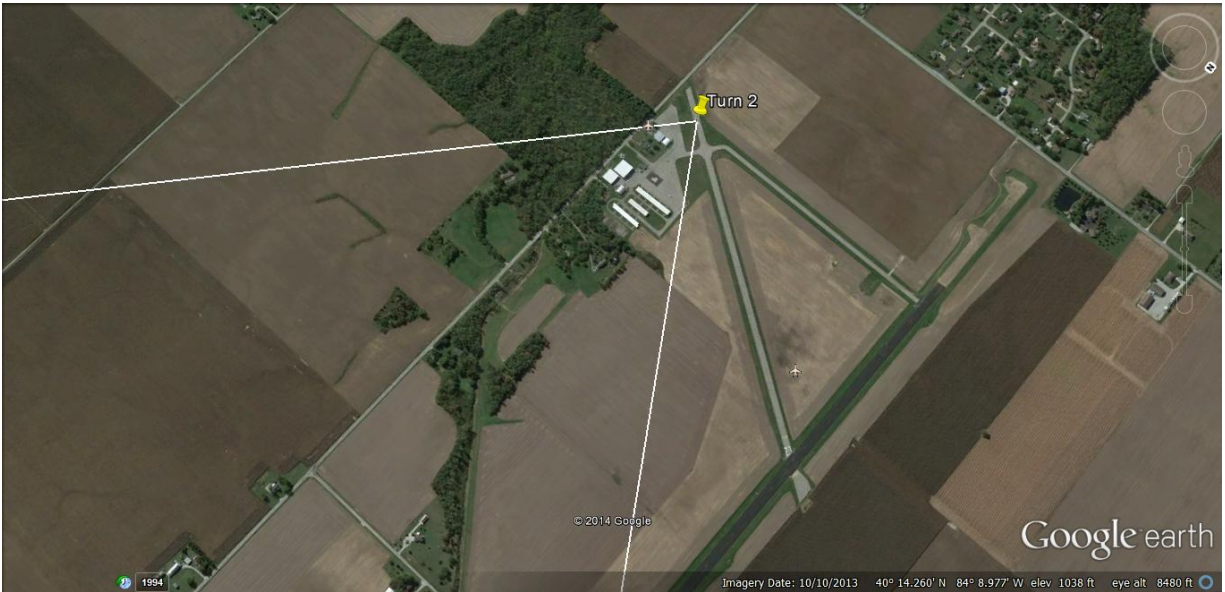
After your launch, switch to 122.800

Turn 1 is (EDJ) Bellefontaine RGNL airport turn point is the center of the ramp.
Turn altitude is 2000 feet MSL



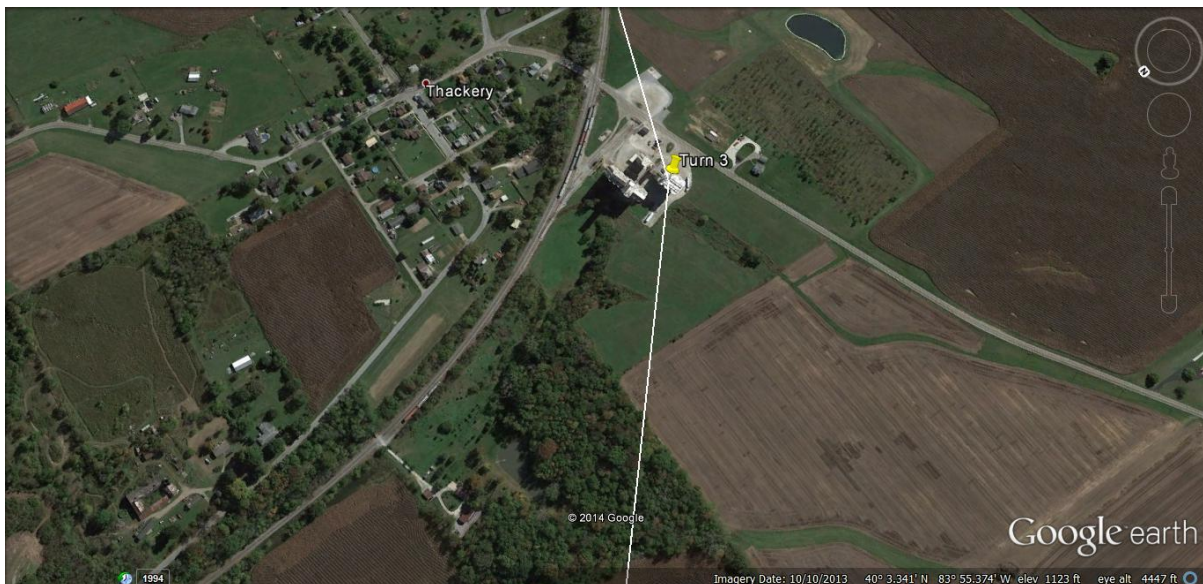
40° 22.34'N 83° 49.15'W 122.800

Turn 2 is (I12) Sidney Munciple airport turn point is the end of the runway 5. Turn altitude is 2000 feet MSL



40° 14.48'N 84° 8.87'W 123.050

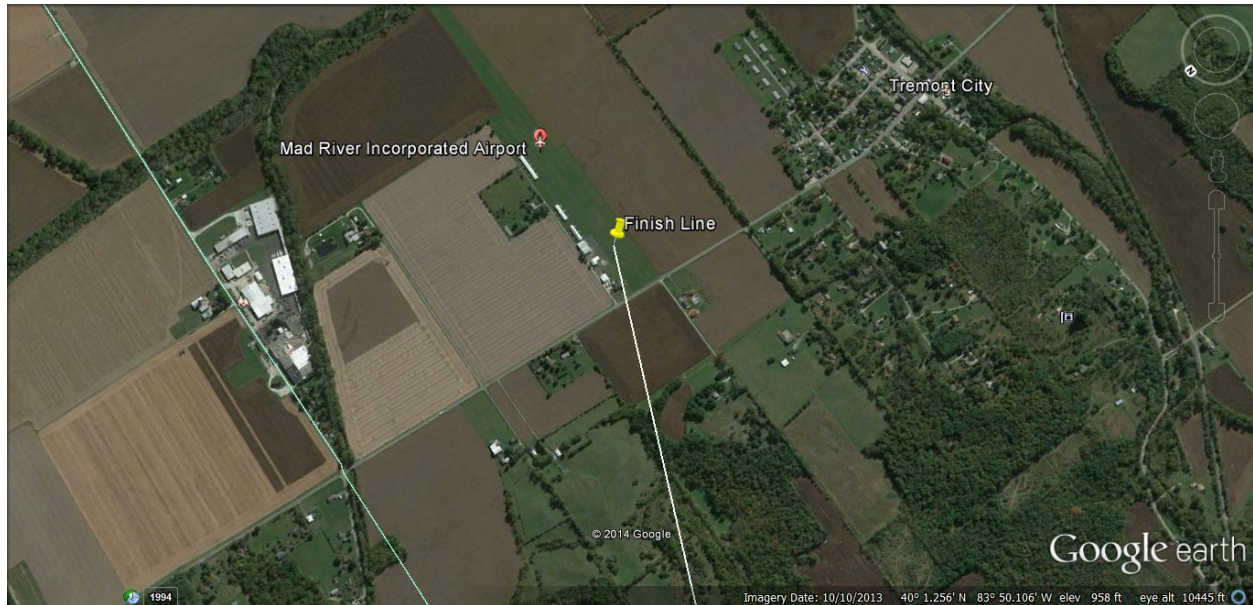
Turn 3 is a Grain Elevator the turn point is the Silos at the elevator. Make your turn at or above 1600 feet MSL.



40° 3.261'N 83° 55.326'W 123.000

Remaining on 123.000 call 2 nautical miles out from finish line. i.e. “Race Two Six, Two miles, finish”.

The finish line is mid field runway 9 at I54. Cross the finish line above 50 feet AGL, calling as you cross, i.e. “Race Two Six, Finish!”



40° 1.228'N 83° 49.985'W 123.000

After your finish, climb to 2000 MSL, Switch to 122.700, and proceed to I74 Grimes Field for recovery. Stay alert for fly-in traffic!

